

INVEST REMARKABLY, LIVE EXTRAORDINARY



HABITAT  
GROUP

# HABITAT GROUP

• ABOUT US • BRAND STORY • BRANDING • OUR PROJECTS  
• THE CREATOR OF LIFESTYLE INVESTMENT



## START *Journal*

*For us at habitat group, the destination  
is not important, rather it is the journey that  
is most precious to us.*





## ABOUT US

*Habitat group*

**H**ABITAT GROUP was founded in 2012, with the intention to become the leading property developer in the lifestyle investment market for high-end to luxury customers through superior designs, quality and excellent investment packages.



*"Every journey has a beginning,  
but ours is the most beautiful."*

## THE HABITAT GROUP

*Brand story*

---

**CHANIN VANIJWONGSE**

: CEO

**W**e began our journey as investors and dreamers. From the very first day it has always been our intention to become a lifestyle investment developer that is highly competitive in delivering projects with superior price, ROI and quality.

our customers. Tomorrow we will become visionaries and groundbreaker. It has always been our destiny to reach the top through our commitment to consistently delivering excellent products, smart, flexible investment and services.

Today HABITAT GROUP is one of the upcoming property developers in Thailand. From investors and dreamers, we have become value creators and go getters. A brand where our promise are always kept and our words are our bonds to

The past has been about laying foundations, the future is all about setting new standards. That is why HABITAT GROUP will be the new benchmark when speaking about the zenith of lifestyle investment in every segment that we contest.





“  
**INVEST REMARKABLY,  
LIVE EXTRAORDINARY**  
”

## MISSION

Our mission is not about how to sell the most units. Rather it is how to deliver the best products and services, and ultimately giving our customers’ a unique lifestyle and investment package that is all about them and not about us.

We strive to place our customers first and foremost when creating products and services. It is our ultimate goal to become the lifestyle investment market benchmark when it comes to consistently delivering properties that are unique and different in thinking, designs and constructions.

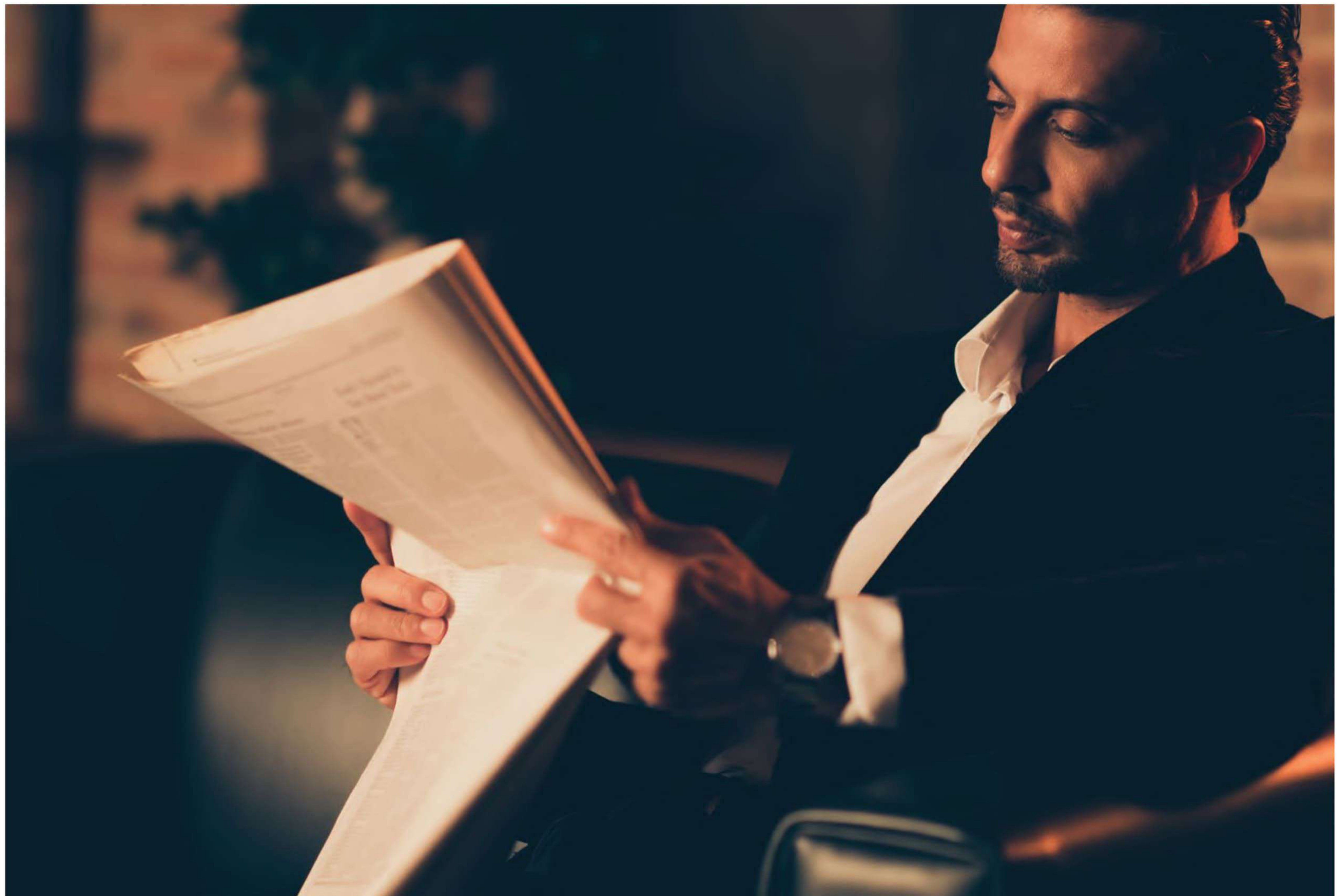
## VISION

The HABITAT GROUP brand vision is to keep improving our products and services at every segment we enter. Through constant R&D and product improvement, we aim to provide our clients with the most innovative and unique properties in every project we launch.

In addition, we envision a future where every stakeholder, whether it is business partners, suppliers, shareholders, staffs to customers are synergised to our brand through cooperation and sincere partnerships that enable HABITAT GROUP to become the leading lifestyle investment property developer in Thailand.

In this, the key to our vision is to create the perfect living investments for our customers through the combination of tangible and intangible values that truly touch our customers’ lives in every facets possible.

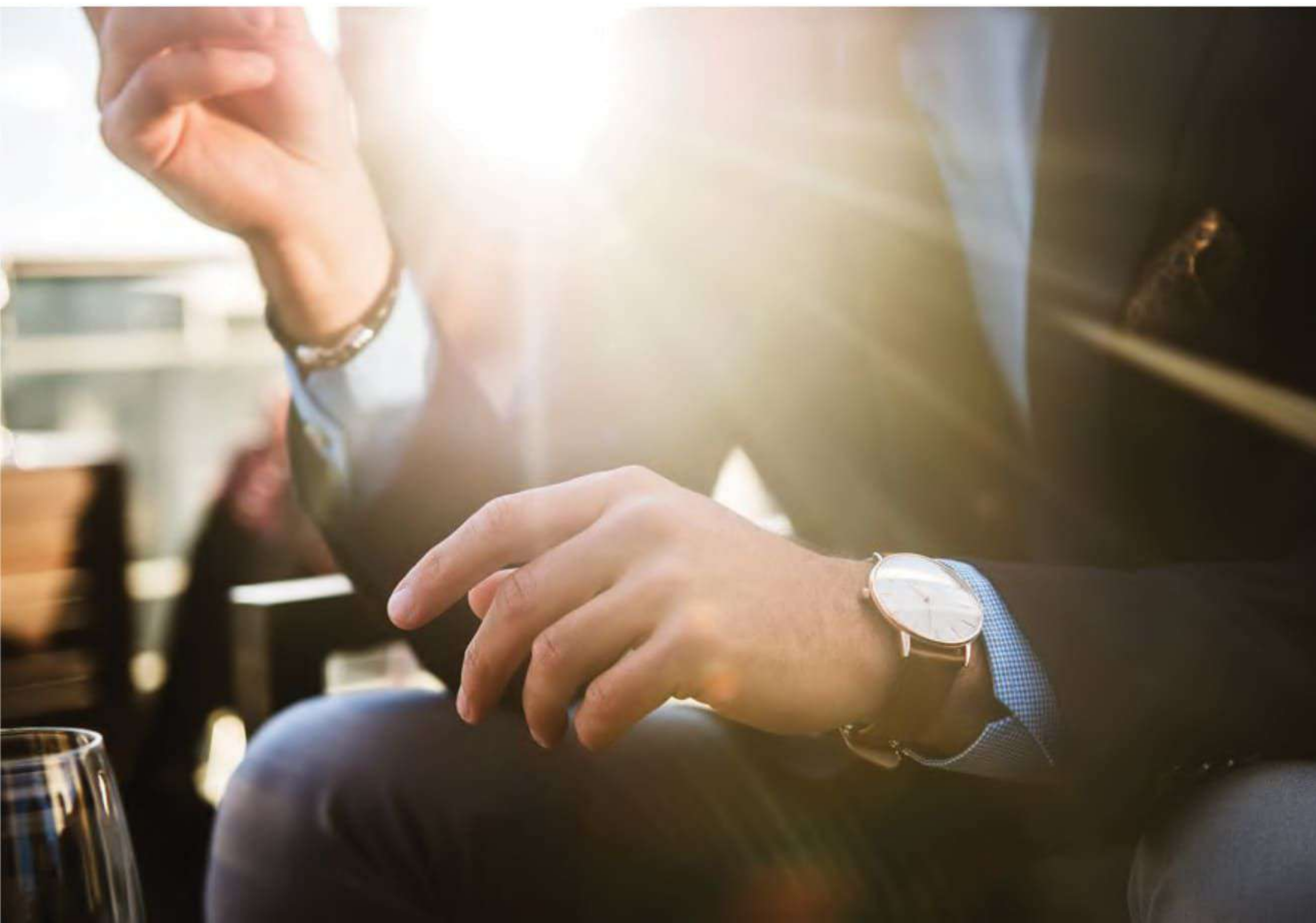






## THE CREATOR OF LIFESTYLE

*Investment*



**H**ABITAT GROUP is the new standard when it comes to the lifestyle investment property market. We don't just sell products and services, rather we are a purveyor of intrinsic values that improve every facet of our customers' lives, values that are the core to every tangible and intangible needs of our customers.

Most importantly, we guarantee that owning a HABITAT GROUP property will not only get you the best yield but also deliver the best in work, life, balance. Ultimately you will feel prouder than ever to invest, own and live in a HABITAT GROUP property.





# PATTAYA

- RAMADA MIRA NORTH PATTAYA • WYNDHAM ATLAS WONGAMAT PATTAYA
- BLUPHERE PATTAYA • BAYPHERE HOTEL PATTAYA
- CROSS VIBE PATTAYA SEAPHERE • CROSS PATTAYA OCEANPHERE • THE VILLE JOMTIEN
- BAYPHERE PREMIER SUITES • WYNDHAM GRAND RESIDENCES WONGAMAT PATTAYA
- HIGHLAND PARK POOL VILLAS PATTAYA





# HIGHLAND PARK

POOL VILLAS

PATTAYA

*Ultimate gated community in Pattaya*



12° 52'36.3"N 100° 57'25.9"E

: TOONGKLOM-TALMAN

Situated in the heart of Pattaya with huge facilities and parks on offer. The grand visage of the open hills of our latest project in Pattaya, Highland Park is now available to you and your loved ones. We have developed the ultimate in modern gated community that cannot be found anywhere else in Pattaya. For investors and second home buyers alike this is truly a project to be cherished comprising of 3 home types all with 4 bedrooms and 4 bathrooms for your pleasure. Live The Pleasant Life at Highland Park





Location :  
Huai Yai ,Bang Lamung ,Pattaya

Project type :  
Pool Villa 192 Units

Project area :  
51 Rai - 51 SQ.Wah

Unit type :  
Fern Villa 167 SQ.M.  
Cassia Pool Villa 240 SQ.M.  
Rosewood Grand Villa 337 SQ.M.

Project value :  
1,500 MB







## WYNDHAM GRAND®

Residences Wongamat Pattaya

A HABITAT GROUP DEVELOPMENT

*The New Standard Of Luxury Resort Living*

02

12° 57' 21.4" N 100° 53' 09.4" E

: NAKLUA

One of the last freehold land in the area, situated right on the curve of the pearl that is the Wongamat Beach. Wyndham Grand Residences Wongamat Pattaya, where the urban and the organic combine to create a majestic combination the entices and delivers on every level of your imagination. Inspired by the waves and curves of Wongamat Beach where located 250 meters away from your place, the Building is an architectural masterpiece that reflects the natural beauty of Wongamat Bay and the growing urban metropolis of the area. Natural lights are integrated with nature to create a sensory ambience of relaxation and well being. Living at Wyndham Grand Residences Wongamat Pattaya, a breathtaking view of the sea will never out of your sight. Furthermore the various facilities on offer from active ones such as active gym, kids club, golf simulation to passive such as floating lounge, onset to the massage room and salon brings together a range of in house amenities that is unrivaled anywhere else in Pattaya.





Location :  
North Pattaya Naklua 18/1

Project value :  
3,300 MB

Project type :  
451 Units

Managed by :  
Habitat Hospitality

Project area :  
3 Rai - 39.75 SQ.Wah

Unit type :  
1Bedroom 27-55 SQ.M.  
2Bedroom 70-77 SQ.M.  
Luxury 2Bedroom 85 SQ.M.  
Luxury 3Bedroom 133-140 SQ.M.  
Luxury 4Bedroom 140-217 SQ.M.







## BAYPHERE

PREMIER SUITES

*Private Beachfront Luxury Condominium In Na Jomtien*

03

12° 50' 29.3" N 100° 54' 20.8" E

: NA JOMTIEN

Take your claim to a stunning, free-hold private beachfront residence in one of the last remaining and most exclusive low-rise luxury condominiums on an idyllic stretch of Na Jomtien beach. Tropical dreams come true with beautifully furnished, private suites boasting 5-star facilities and services expertly managed by Habitat Hospitality for an unforgettable seaside luxury experience. Comprising premium materials and décor designed to offer superb functionality and sublime living spaces, Bayphere Premier Suites is a rare chance to invest in one of Thailand's fastest developing and most popular beachside destinations.





Location :  
Pattaya, Na Jomtien 18

Project type :  
Condominium 119 Units

Project area :  
o Rai - 3 ngan - 99 SQ.Wah

Unit type :  
Studio 30 SQ.M.  
1 Bedroom 45-48 SQ.M.  
2 Bedroom 58-120 SQ.M.

Project value :  
858 MB

Managed by :  
Habitat Hospitality





# RAMADA<sup>®</sup>

BY WYNDHAM

## MIRA NORTH PATTAYA

DEVELOPED BY HABITAT GROUP

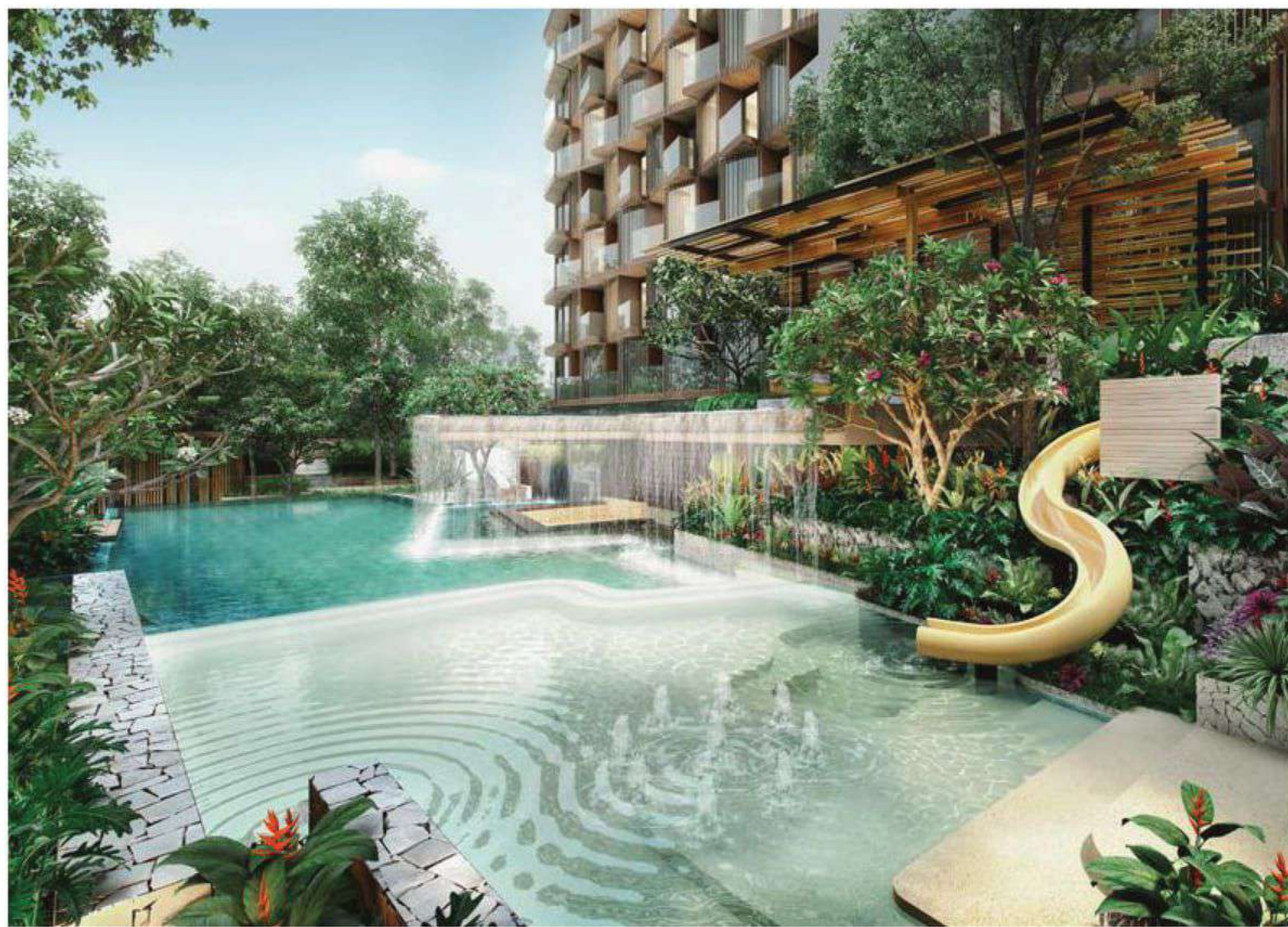
*Make Innesistble Relaxation Alive.*

04

12° 56' 46.4" N / 100° 53' 45.6" E  
: NORTH PATTAYA

**R**AMADA MIRA – North Pattaya located right in the heart of Pattaya 90 minutes Bangkok driving to keep all the business matters close and all facilities close. Surrounded by the natural elements that's ideal for relaxation underneath tree shades and sea breeze. Along with the world class luxury service and the facilities at the highest level. To help you define the new meaning of living the fullest life of yours. The property managed by Wyndham Hotel Management is one of the largest and best performing hospitality companies, with a global portfolio encompassing every segment.





Location :  
North Pattaya 2/2

Project type :  
332 Units

Project area :  
2-3-99 Rai (1,199 SQ.Wah)

Unit type :  
Deluxe room types  
(Usable area appx. 29 - 30 SQ.M.)  
Junior suite types  
(Usable area appx. 45 SQ.M.)  
Suite types  
(Usable area appx. 55 SQ.M.)

Project value :  
1,500 MB

Managed by :  
Habitat Hospitality





**WYNDHAM®**

Atlas Wongamat  
Pattaya

*The world prime spot on an urban beach.*

05

12°57'08.5"N / 100°53'06.1"E

: WONGAMAT

Urban Beach, Northern Pattaya's first condominium for investment. It is only 200 metres away from the beach and 300 metres from Terminal 21 on North Pattaya Road. Thus, this condominium is truly convenient to travel and relax. The architecture comes in the form of Urban Modernity. There is a swimming pool on the rooftop that goes straight across the Atrium, the '40 Degree North Rooftop Eatery & Bar' is also situated on the rooftop, so you can enjoy your special meal while watching the sunset at Wongamat beach. For all these reasons, Atlas Wongamat Pattaya will definitely become Northern Pattaya's new checkpoint.





Location :  
Pattaya, Na Klua 22

Project type :  
Condominium 192 Units

Project area :  
1 Rai - 53 SQ.Wah

Unit type :  
Deluxe (26 - 28 SQ.M.)  
Junior Suite (39.4 SQ.M.)  
Suite (52 - 57 SQ.M.)

Project value :  
900 MB

Managed by :  
Habitat Hospitality

*Lifestyle investment is for those  
with the vision to be ahead of others  
while enjoying the fruits of their  
labours.*





# BluPhere

Pattaya

*New visions in resort living.*

06

12° 50' 25.8" N / 100° 54' 24.3" E  
: NA JOMTIEN

Tropical resort living is at the very essence of Best Western Premier Collection BluPhere Pattaya. On reaching the Rooftop facilities, the 270-degree panoramas take your breath away. In the center of the first floor stands a mature tree, which acts as a surprise feature within the entire Lobby and Atrium. The vertical line of the mature tree blends almost seamlessly with the line of the inside facade and Atrium, connecting as one with the rooftop landscape. In the foreground the cool blue waters of the Swimming Pool and Jacuzzi seamlessly blend with the massive sky, creating a wonderland that inspired the name BluPhere.





Location :  
Pattaya, Na Jomtien 18

Project type :  
Condominium 193 Units

Project area :  
3 Ngan - 97 SQ.Wah

Unit type :  
Studio (22 - 26 SQ.M.)

Project value :  
650 MB

Managed by :  
Habitat Hospitality







Location :  
Pattaya, Na Jomtien 18

Project type :  
Condominium 174 Units

Project area :  
1 Rai - 31 SQ.Wah

Unit type :  
Studio (30 - 33 SQ.M.)

Project value :  
700 MB

Managed by :  
Habitat Hospitality

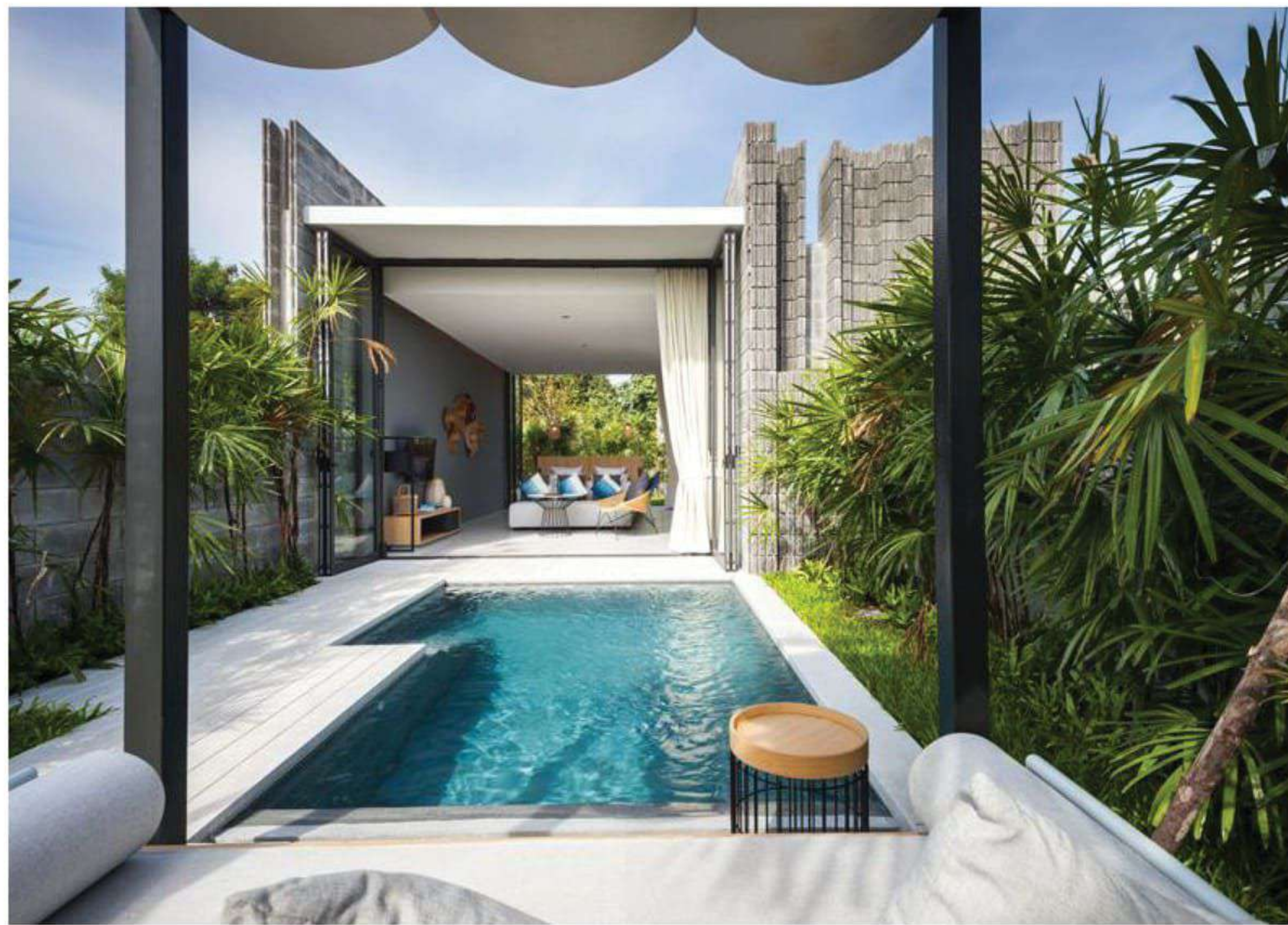
*A unique life experience is what  
we strive for at habitat group.*











Location :  
Pattaya, Na Jomtien 56

Project type :  
Pool Villas 59 Units

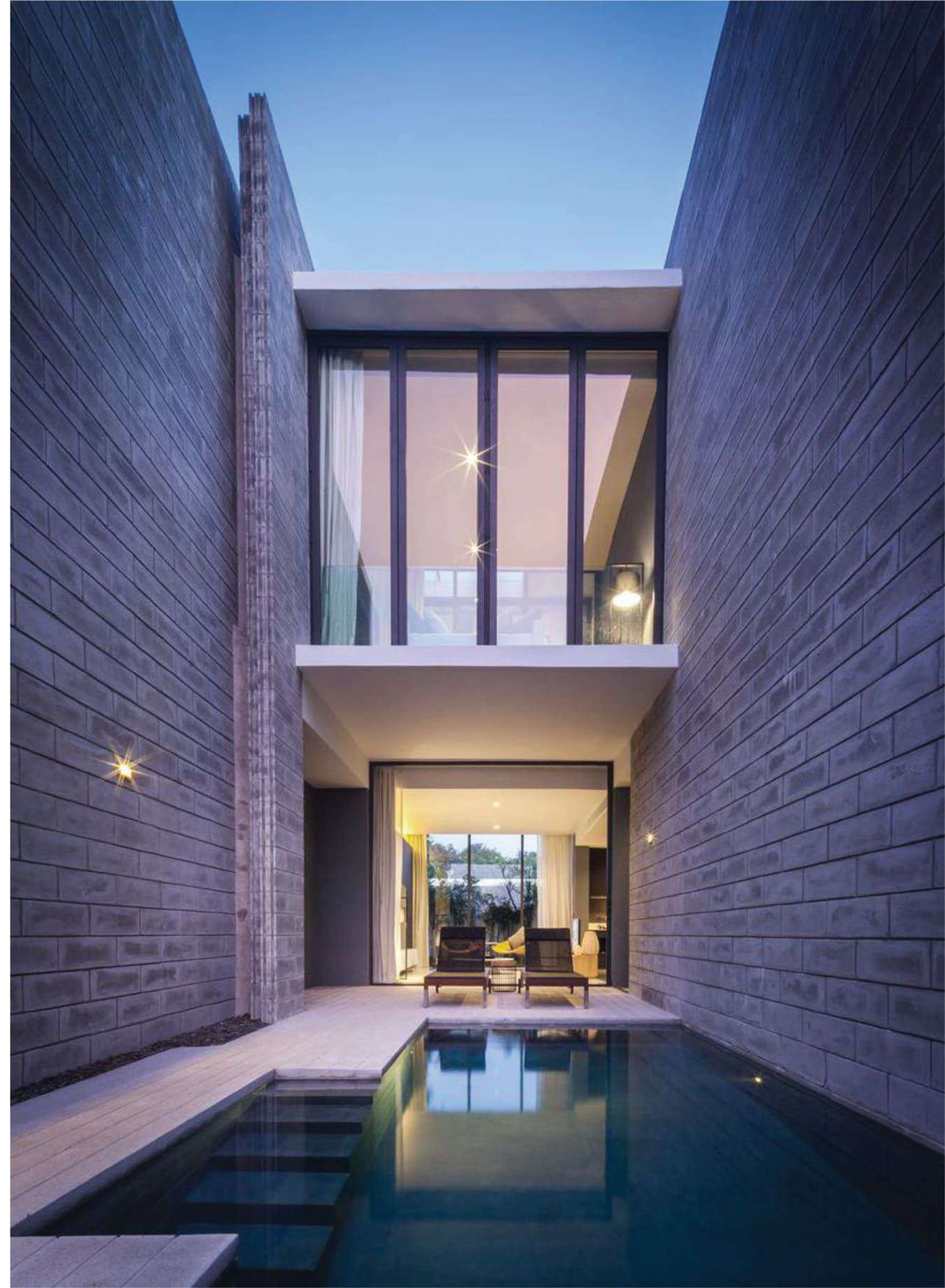
Project area :  
9 Rai - 3 Ngan - 3 SQ.Wah

Unit type :  
1 Bedroom and 2 Bedroom  
Pool Villas

Project value :  
780 MB

Managed by :  
Cross Hotels & Resorts

*Life is not just a building but also  
the happiness of those who  
live in them.*







Location :  
Pattaya, Na Jomtien 32

Project type :  
Condominium 65 Units

Project area :  
2 Ngan - 96 SQ.Wah

Unit type :  
1 Bedroom (29 - 35 SQ.M.)  
1 Bedroom plus (54 SQ.M.)

Project value :  
300 MB

Managed by :  
Cross Hotels & Resorts





*Resort style... pool villa*

10

---

**12° 52' 43.4"N / 100° 54' 27.3"E**  
: JOMTIEN

All 80 villas were sold out in less than 18 months, details and accessories, as well as top-of-the-line electrical appliances, immediately ready to rent and occupy. Our comprehensive rental management team includes expert specialists in booking, marketing and attentive customer service. Experienced technicians ensure efficient operation of pool, gardens, and maid services, providing quick maintenance and repairs whenever required.





Location :  
Pattaya, Jomtien

Project type :  
Pool Villas 80 Units

Project area :  
32 Rai - 1 Ngan - 79 SQ.Wah

Unit type :  
2 - 6 Bedroom Pool Villas

Project value :  
600 MB

Managed by :  
Habitat Rental









# BANGKOK

• WALDEN THONGLOR 8 • WALDEN THONGLOR 13 • WALDEN SUKHUMVIT 39  
• WALDEN ASOKE • LEROY RUAMRUDEE



BANGKOK  
*City*



Leroy Ruamrudee :  
Wittayu

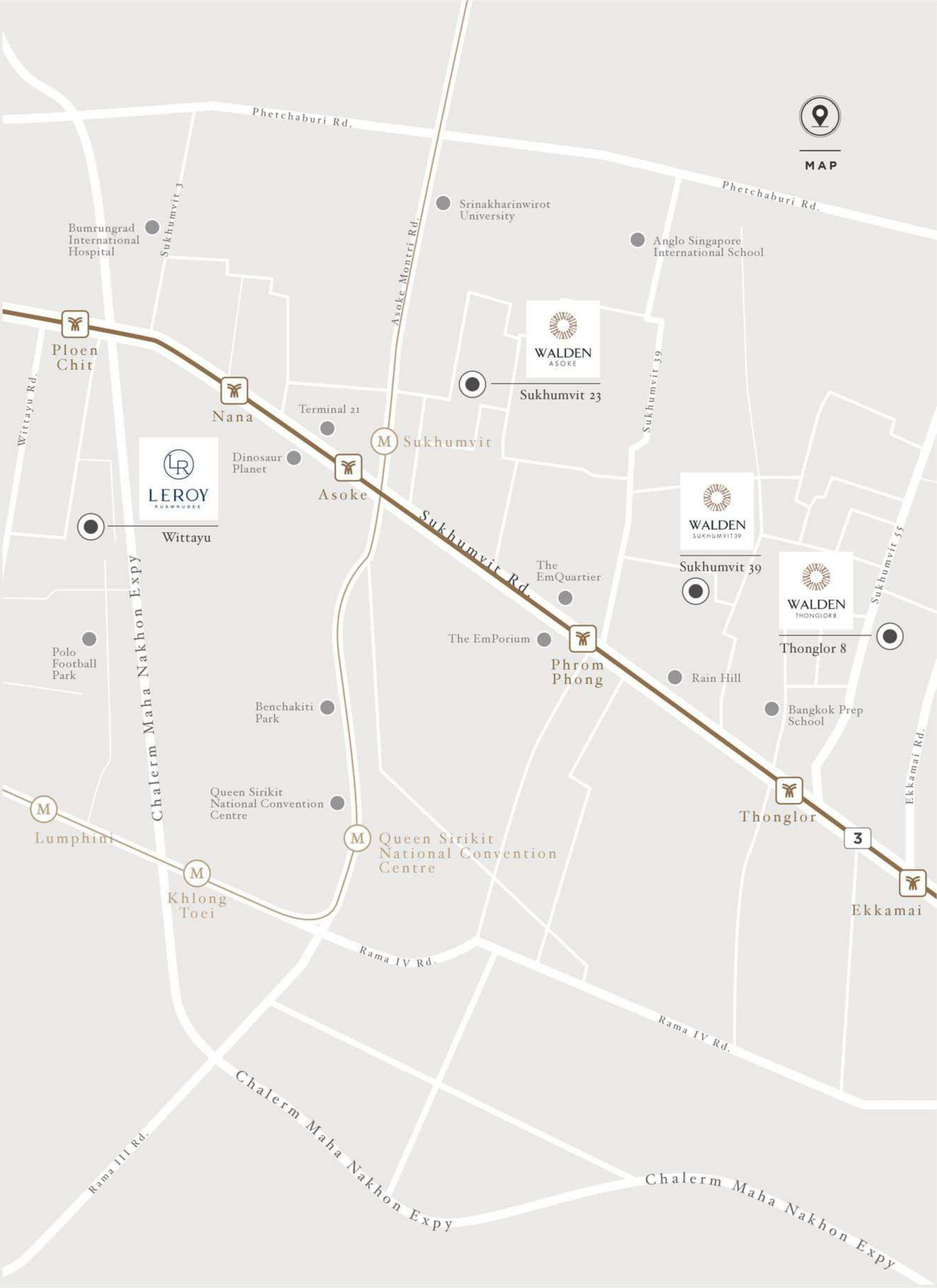
Walden Asoke :  
Sukhumvit 23

Walden Sukhumvit 39 :  
Sukhumvit 39

Walden Thonglor 8 :  
Thonglor 8



: North





## THE WALDEN PLATFORM

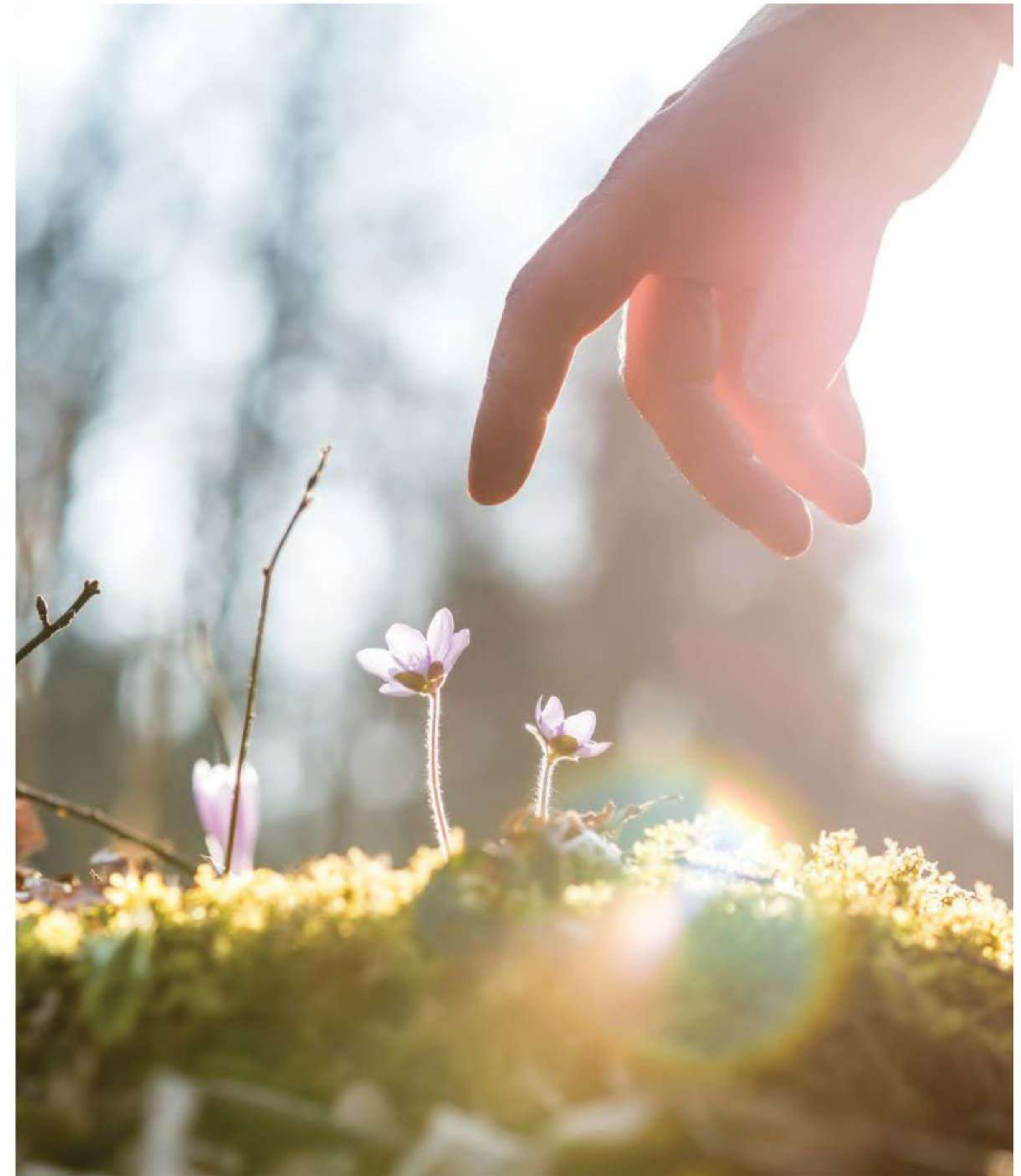
: THE WALDEN WAS CREATED BY  
“VISIONARIES, INNOVATORS AND FORWARD THINKERS.”

Our products were designed to create the new alternative for a new generation of consumers who value both style and substance in their lives, whether it is the car they drive, the clothes they wear, the food they eat and most importantly the place they live.

Our products are made for consumers who want to differentiate themselves from the market norm. They are tired of the same old brands, outdated values and social norms.

Which is why the Walden platform will be the ultimate answer to those who are seeking something new and different to what is on offer in the current market.

Therefore, we have created a platform that mixes technology, nature and community seamlessly in order to create a product platform that is unique, inspiring, exciting and ultimately offers a glimpse of what the potential of future can be.







## WALDEN THONGLOR 8

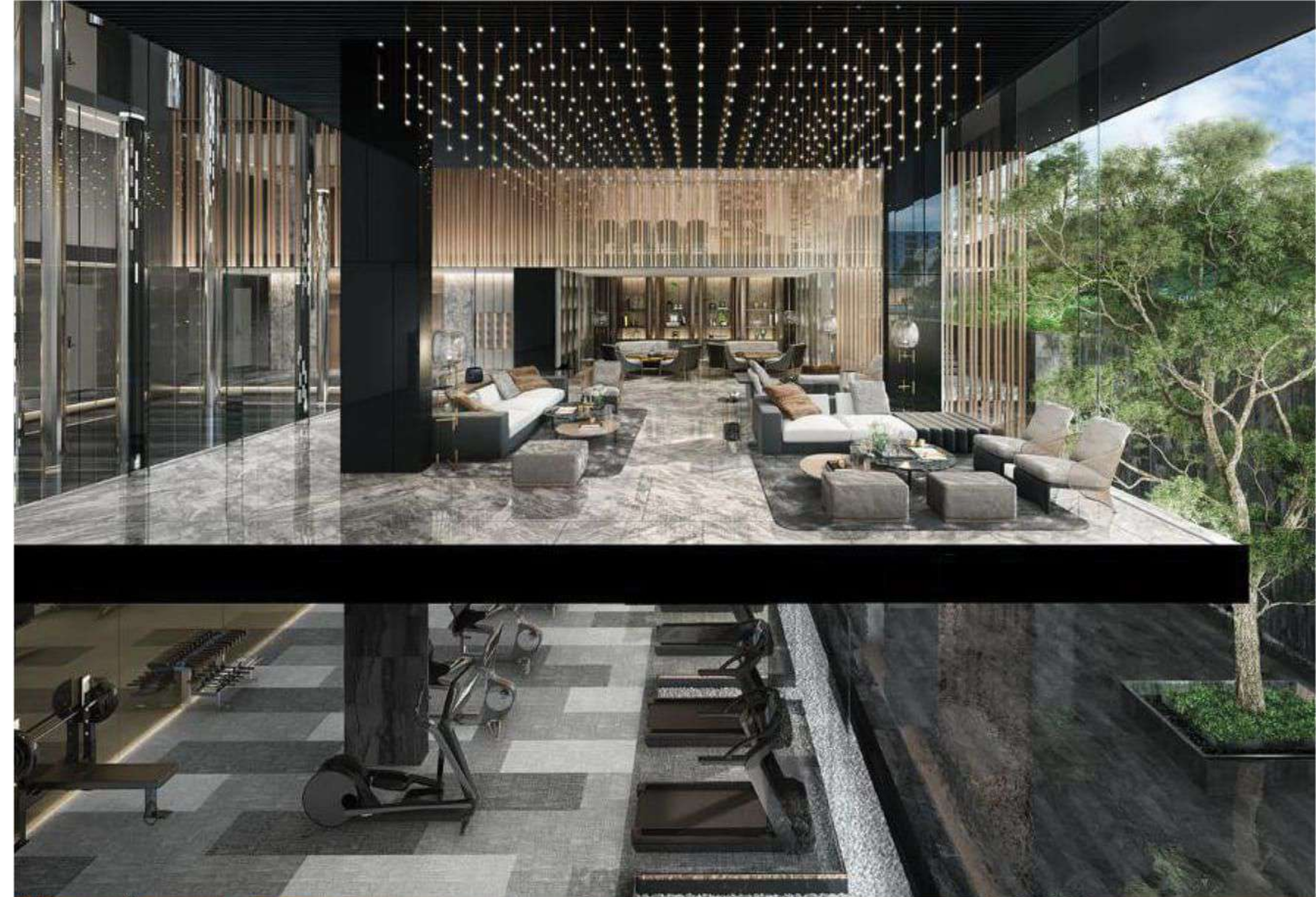
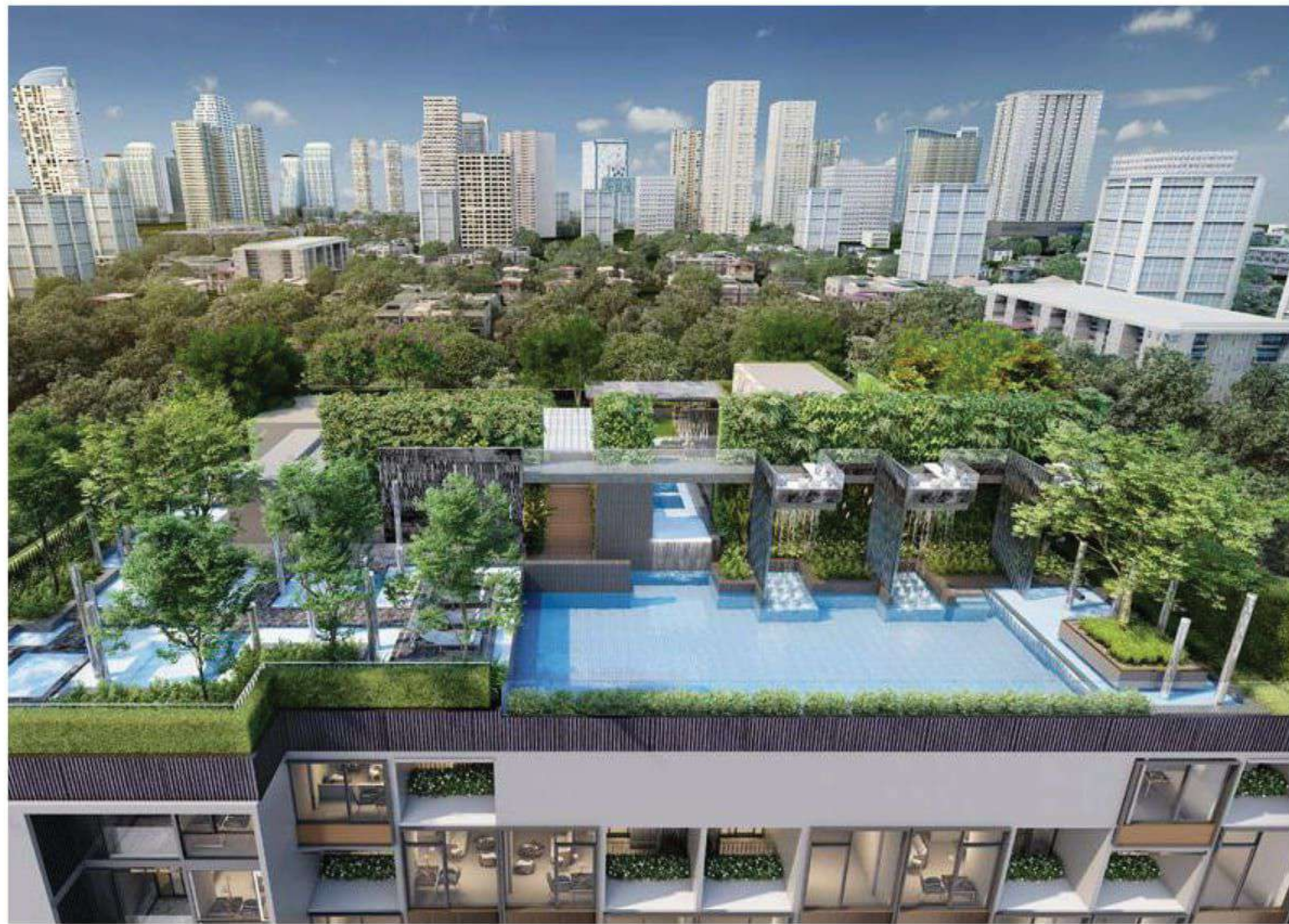
*Reinventing glamorous living.*



13°43'48.7"N / 100°34'58.0"E  
: THONGLOR

Located on a residential area of the charming Thonglor Soi 8, Walden Thonglor 8 offers a property that is both personalized and glamorous. Walden Thonglor 8 is a project with unique character in terms of innovative design and superb functionality, is all about a seamless combination of modernity and nature, encapsulated in privacy yet still brimming with the neighborhood's creative life energy.





Location :  
Wattana, Sukhumvit 55

Project value :  
1,450 MB

Project type :  
Residential 117 Units

Managed by :  
Habitat Group

Project area :  
1-0-2 Rai (1,611 SQ.M.)

Unit type :  
1 Bedroom (32 SQ.M.)  
1 Bedroom Plus (40 - 58 SQ.M.)  
2 Bedroom(L) (59 - 71 SQ.M.)







## WALDEN

SUKHUMVIT 39

*Redefine private luxury living.*

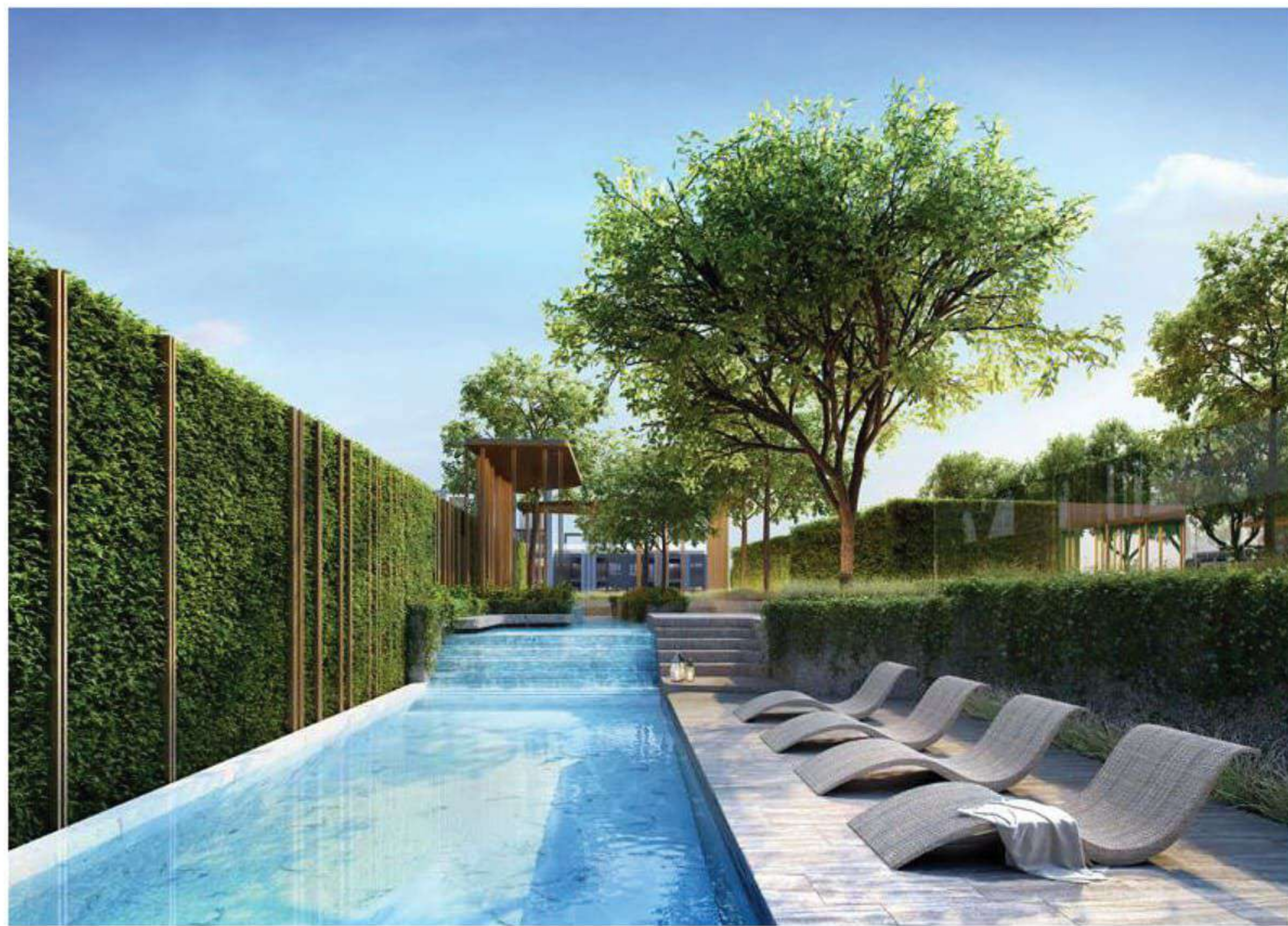


---

13°43'58.1"N / 100°34'30.3"E  
: SUKHUMVIT

Experience The Walden Sukhumvit 39, a unique luxury low rise project that focuses on privacy that is enveloped by nature. A one of a kind property that seamlessly merge luxury, privacy and nature into one enticing package. The Walden Sukhumvit 39 offers the complete lifestyle package that is befitting a project that is both charming and elegant in itself by being embraced by nature.





Location :  
Sukhumvit 39

Project type :  
Residential 116 Units

Project area :  
3 Ngan - 22 SQ. Wah

Unit type :  
1 Bedroom (31 - 45 SQ.M.)  
2 Bedroom (45 - 60 SQ.M.)

Project value :  
950 MB

Managed by :  
Habitat Group





WALDEN  
ASOKE

*Reflecting uniqueness.*

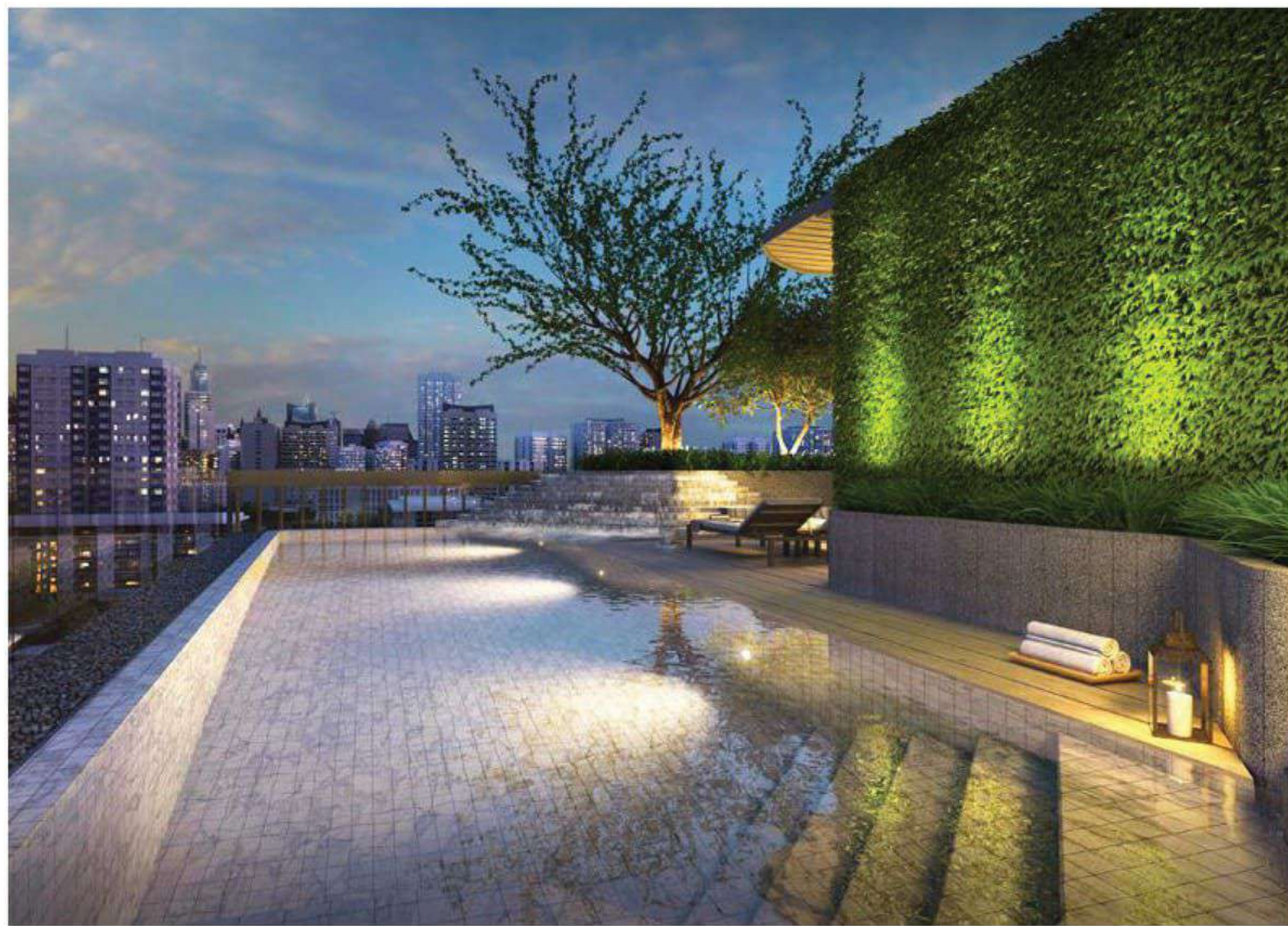


---

13°44'22.4"N / 100°33'55.6"E  
: SUKHUMVIT 23

The “Unique Luxury Condominium” which is located in Soi Sukhumvit 23, Walden Asoke is designed to the minutest detail in the modern luxury style with a touch of oriental art, and all rooms along with the condominium public area is equipped with great facilities. These include a ‘Hot & Cold Spa’ for you to relax, the ‘Vichy Corner’ which is intended as a family zone, and a ‘Sky Pavilion’ for you to indulge the city night lights from above.





Location :  
Sukhumvit 23

Project type :  
Residential 83 Units

Project area :  
2 Ngan - 20 SQ.Wah

Unit type :  
1 Bedroom (31.10 - 64.11 SQ.M.)  
2 Bedroom (64.61 - 65.43 SQ.M.)

Project value :  
700 MB

Managed by :  
Habitat Group

*We believe in making your lives  
as comfortable as the buildings  
that you live in.*





LEROY  
RUAMRUDEE

*Live the legend.*

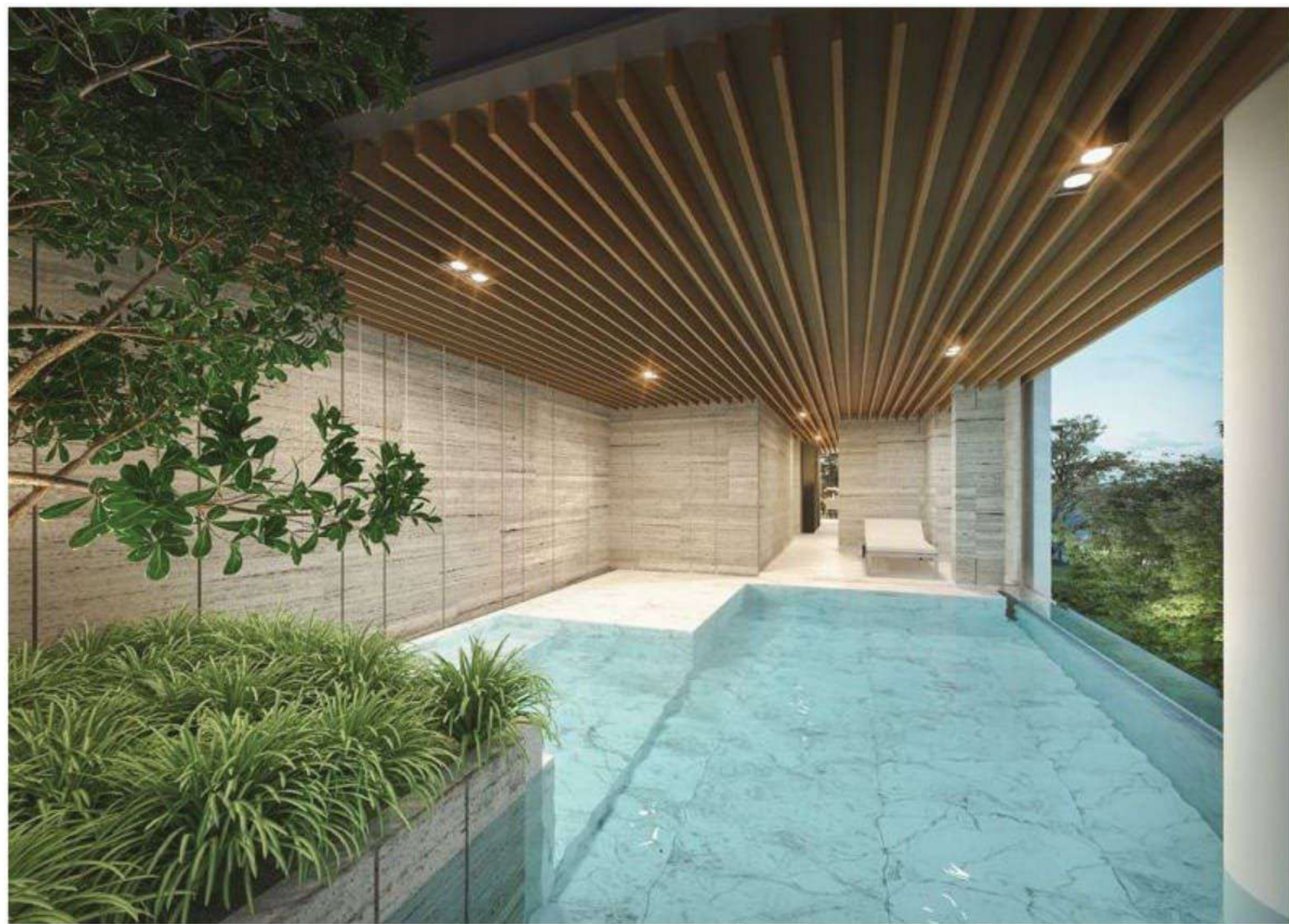


---

13°44'10.8"N / 100°33'03.0"E  
: WITTAYU

P hloen Chit has always been a well-sought after area and in the future, this will definitely hold true. It is a rare gem in Thailand's property and close proximity to the most prime amenities this country has to offer. Leroy is a hidden treasure that can be yours to pass onto your loved ones. The dual space allows the different family members to enjoy their own activities to the fullest and develop their potential without limitations. The large space provides freedom as well as comfort and luxury which is rare for a home downtown.





Location :  
Phloen Chit, Soi Ruamrudee 2

Project type :  
Ultimate Luxury House

Project area :  
1 Ngan - 17.4 SQ. Wah

Unit type :  
LEGACY  
(59.4 SQ.W. / 1,060 SQ.M.)  
ROYCE  
(58.95 SQ.W. / 1,060 SQ.M.)

Project value :  
250 MB



